

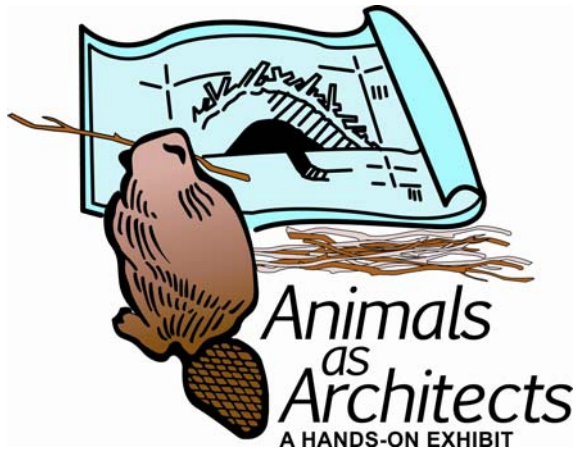


# Animals as Architects

A HANDS-ON EXHIBIT

exploring science - literature - art

To book this exhibit for your community,  
605-773-5050 or [www.hopsd.org](http://www.hopsd.org)



Why do beavers build dams? Why do moles burrow underground? Different animals exhibit different behaviors and physical traits that help them adapt to their environment and survive as a species.

**Over 15 hands-on activities**

**Now Booking – call for rental information.**

**Space Requirements: approx. 300-500 sq. ft.**

**Geared for children preschool - 6th graders, their parents, caregivers and teachers.**

**Included with the exhibit:**

- ◆ Interactive Design – a complete turnkey program to enrich learning opportunities in your community.
- ◆ Exhibit Manual – with descriptions, fact sheets, activities, and suggested resources.
- ◆ Experts in the Field – Resources including recommended scholars, artists and other experts who could conduct more in-depth programming.
- ◆ Educational Kits – Science kit includes experiments and supplies. The art kit provides instructions and supplies for conducting art and art appreciation activities. The literature kit includes books, color sheets, crayons and games.
- ◆ Starter Kit – This backpack will be left with you when the exhibit closes, and includes science, literature, and art activities, with resources for home use. Start your own permanent loan kit program!
- ◆ School Field Trips – Promote school tours with pre- and post-visit activities to continue science, literature and art learning in the classroom.
- ◆ Marketing Materials – Marketing ideas and tools to promote this exhibit.

**Testimonials:**

What others are saying about HOP exhibits...

"Interactive and hands-on was great!"

*Leanna Martinez  
Rapid City Public Library*

"It taught me different dinosaurs that I didn't know about."

*Student referring to  
"Dinostories" HOP Exhibit  
Canistota Public School*

The HOP exhibits are great for smaller communities especially because of budget constraints. This is a wonderful opportunity to bring high quality and fun educational programs to our students".

*Angela Ostrander  
Faith Public Library*



**What is HOP?**

The Hands-On Partnership for Science, Literature, and Art in South Dakota is a project in which kids across the state have the chance to participate in hands-on activities. These activities are combined into a series of easy-to-assemble traveling exhibits that are touring around to different libraries across the state. Each exhibit has kits that feature educational activities that can be used for fun or in classroom-based activities.



## Exhibit Experience

Animals are amazing architects. They burrow, weave, shape and sculpt. They create comfortable, secure homes out of the resources they find in their surroundings, guided by fine-tuned instincts developed over hundreds of years. ***Animals as Architects*** introduces visitors to these skilled craftsmen who work without blueprints, tape measures or T-squares.

### The Matching Game

Spin the blocks and match the animal with the materials they use to build their homes.

*Designed to teach students about the diversity of materials used by animals to build their structures.*

### Nesting like the Birds

Build your own "human" sized bird nest!

*Visitors can build a nest with foam tubes and wooden base big enough to sit in!*

### Spider Webs

Create a spider web out of loops and pegs or do a crayon rubbing of a spider web to take home!

*This two-sided exhibit studies the design of spider webs and the different types of spiders that create them.*

### Termite Mound Model

Explore the insides of an African Termite mound.

*A five foot model of an African termite mound with the face of the mound has been "eroded away" so students can study the inside features.*

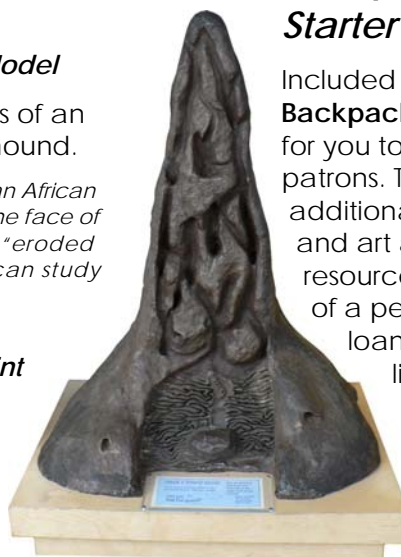
### Discovery Blueprint Tables

Three tables feature different animals and their architectural skills.

### Floor Puzzles

Discover the underground structures of a prairie dog town.

*The pieces of the puzzle remove to reveal the underground structure and neighbors of prairie dogs.*



## Activity Kits!

To provide additional learning experiences, the exhibits will each include three programming kits.

- ◆ The **Science Kit** includes simple experiments and the supplies to conduct them.
- ◆ An **Art Kit** will provide instructions and supplies for conducting art and art appreciation activities with real works of art.
- ◆ The **Literature Kit** has theme related books, color sheets, games and puzzles plus much more!

## Backpack Program Starter

Included with the exhibit is the **Backpack Kit** which is designed for you to check out to your patrons. This kit will feature additional science, literature and art activities and resources. This can be the start of a permanent backpack loan program at your library.



For more information, contact:

## HOP Project

Kathleen Slocum, Director  
605-773-5050  
Kathleen.Slocum@state.sd.us



**Project Partners:** SD State Library, SD Arts Council, SD Discovery Center, Dahl Arts Center, Rawlins Municipal Library and the SD School of Mines & Technology

**Grant Funding Provided by:** The Institute of Museum & Library Services

